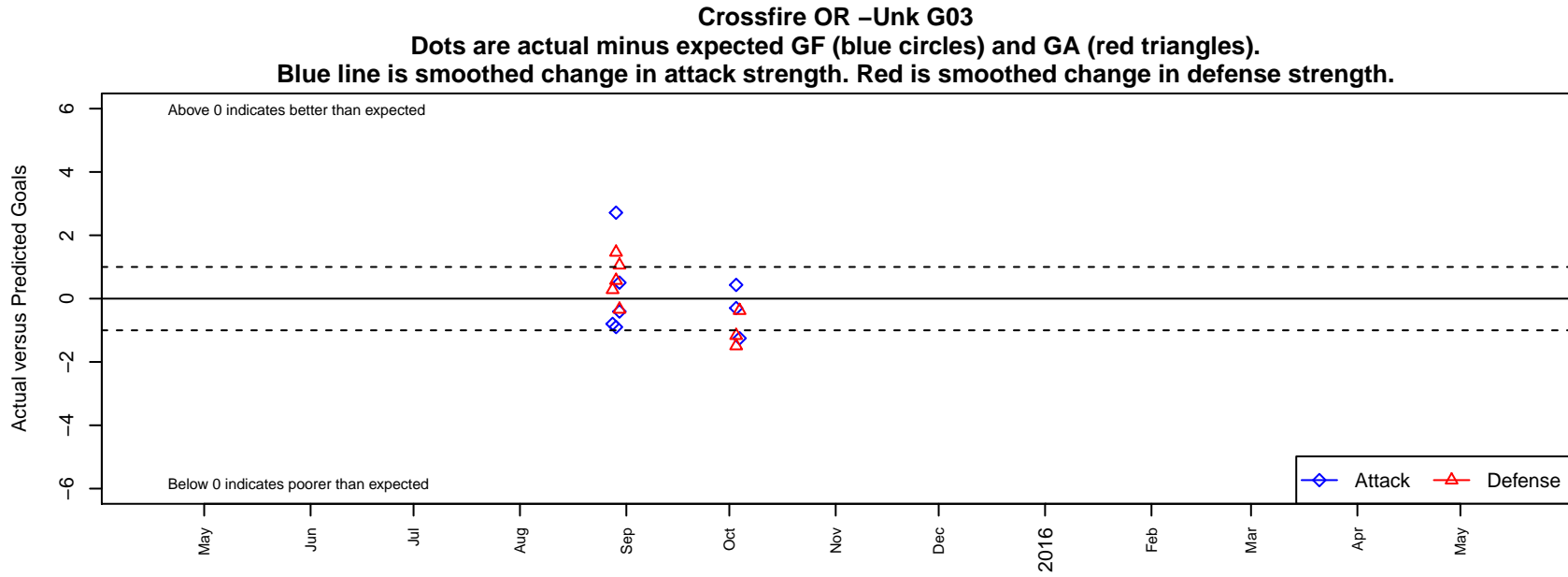


Crossfire OR -Unk G03

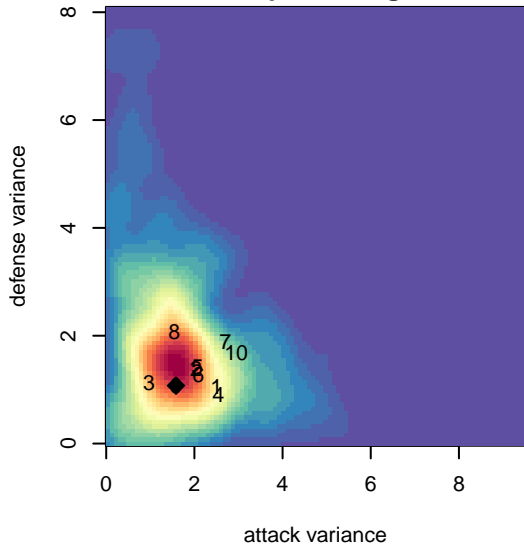
Crossfire Oregon
Lake Oswego, OR
G03 total strength=857
attack=1.28 defense=1.16

alt names used:
CROSSFIRE OREGON U12G (OR)

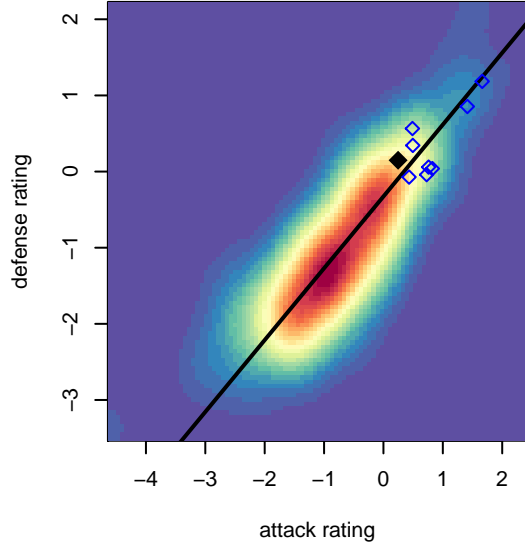
Venues played:
2015 NWCL U12 U12



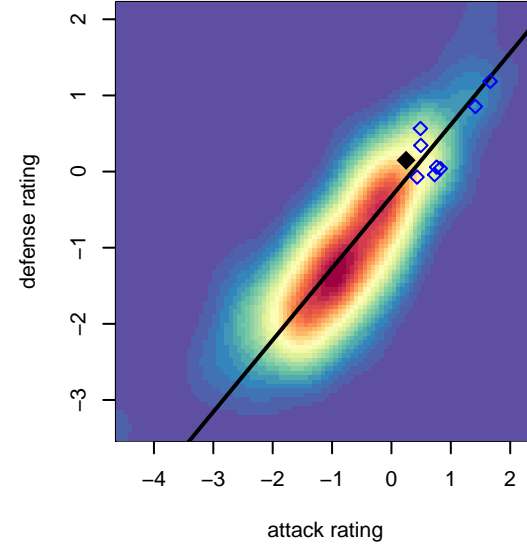
**attack and defense variance (black dot)
relative to other teams
and top 10 in region**



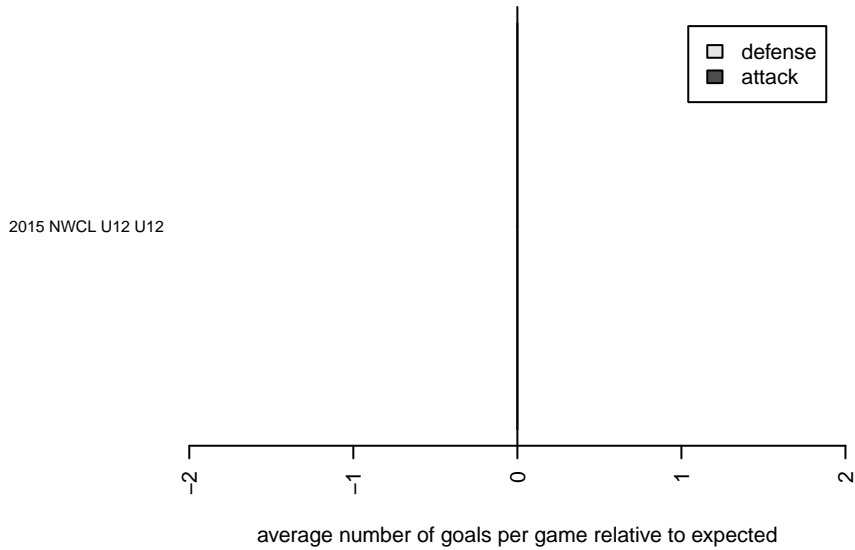
**attack and defense rating
relative to others at age
and all opponents in last 13 months**



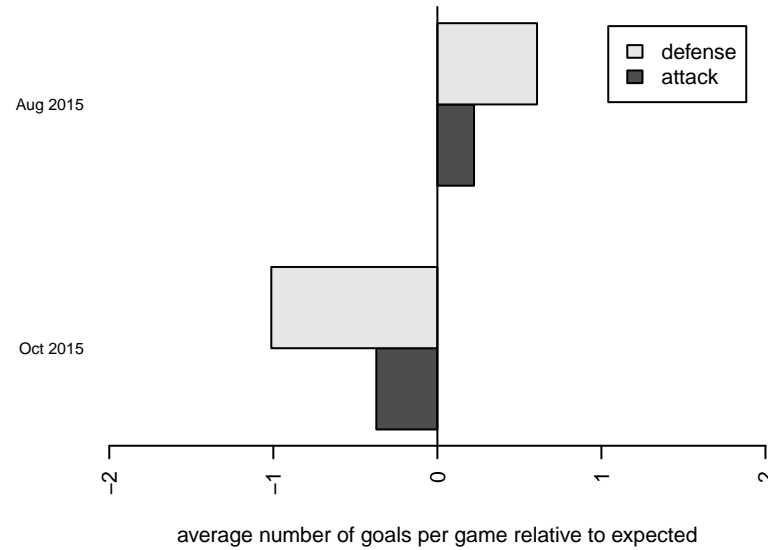
**attack and defense rating
relative to others at age
and all opponents in last 13 months**



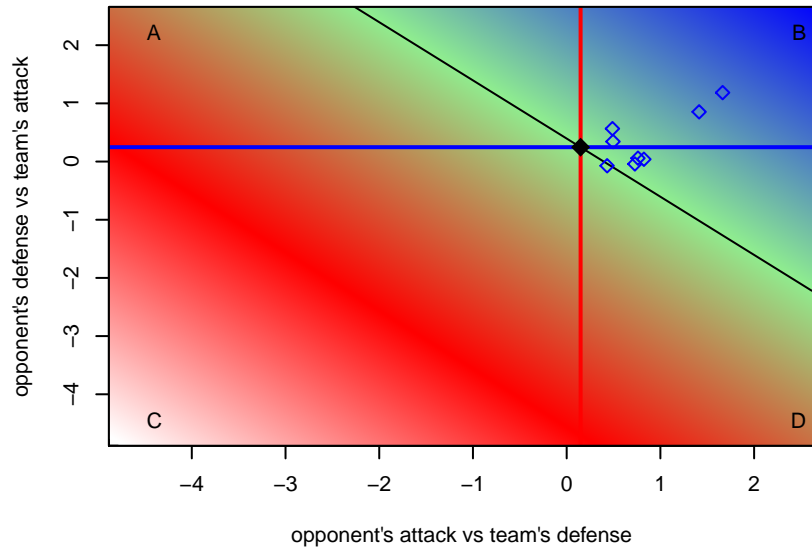
Performance relative to 13 month average



Performance relative to 13 month average



Distribution of opponents
 Red = Lose zone, Blue = Win zone, Green = Even
 Black line separates win/lose zones



lot. A=Neither has attack advantage, B=Opponent has both attack and defense advantage, C=Opponent has both attack and defense disadvantage, D=Both have

date	home		away		venue	pred.home	pred.away
2015-10-04	Crossfire OR -Unk G03	0	Washington Timbers Red G03	2	2015 NWCL U12 U12	1.25	1.62
2015-10-03	Crossfire OR -Unk G03	1	Indie Chicas Lime G03	3	2015 NWCL U12 U12	1.30	1.83
2015-10-03	Crossfire OR -Unk G03	1	THUSC Selenium Black G03	5	2015 NWCL U12 U12	0.57	3.51
2015-08-30	Crossfire OR -Unk G03	2	Eastside Timbers Red G03	2	2015 NWCL U12 U12	1.50	1.66
2015-08-30	Crossfire Premier Hatrup G03	3	Crossfire OR -Unk G03	0	2015 NWCL U12 U12	4.06	0.41
2015-08-29	Crossfire OR -Unk G03	0	FC Nova Pink JT G03	1	2015 NWCL U12 U12	0.90	1.57
2015-08-29	Crossfire OR -Unk G03	4	THUSC Selenium Green G03	0	2015 NWCL U12 U12	1.29	1.46
2015-08-28	Crossfire OR -Unk G03	0	WA Rush G03	1	2015 NWCL U12 U12	0.80	1.28